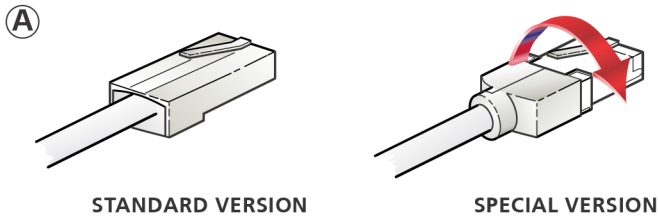
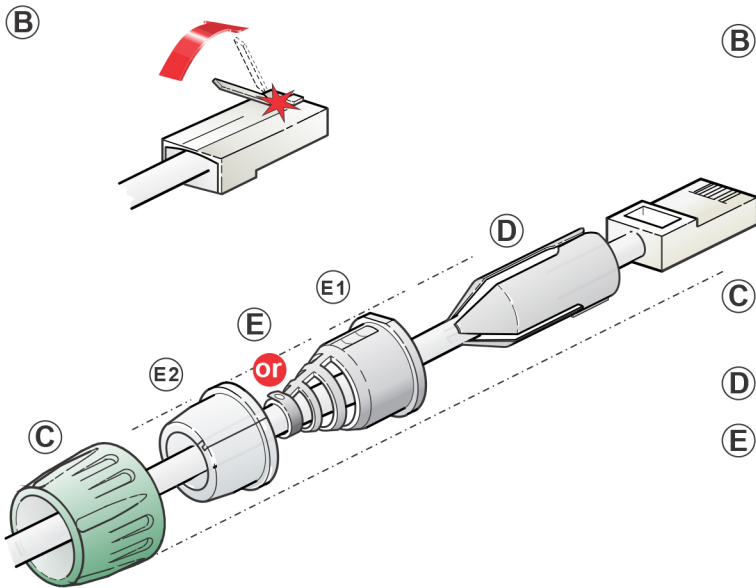


ASSEMBLY INSTRUCTION

etherCON | NE8MC, Ruggedized RJ 45 Data Connector



A Special version: remove the cover

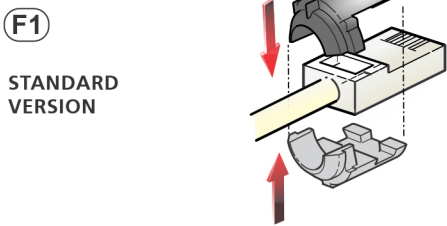


B Cut off the release tab of RJ45 plug

C Slide the bushing over the connector onto the cable.

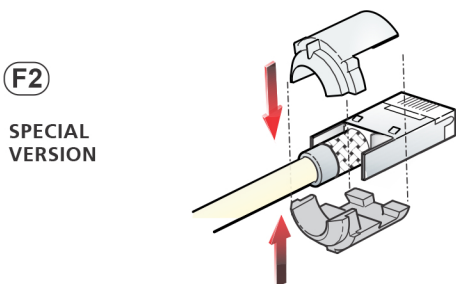
D Put the chuck onto the cable.

E Put the suitable boot on the cable:
- E1: for cable O.D. up to 5 mm (0.2")
- E2: for cable O.D. up to 8 mm (0.3")

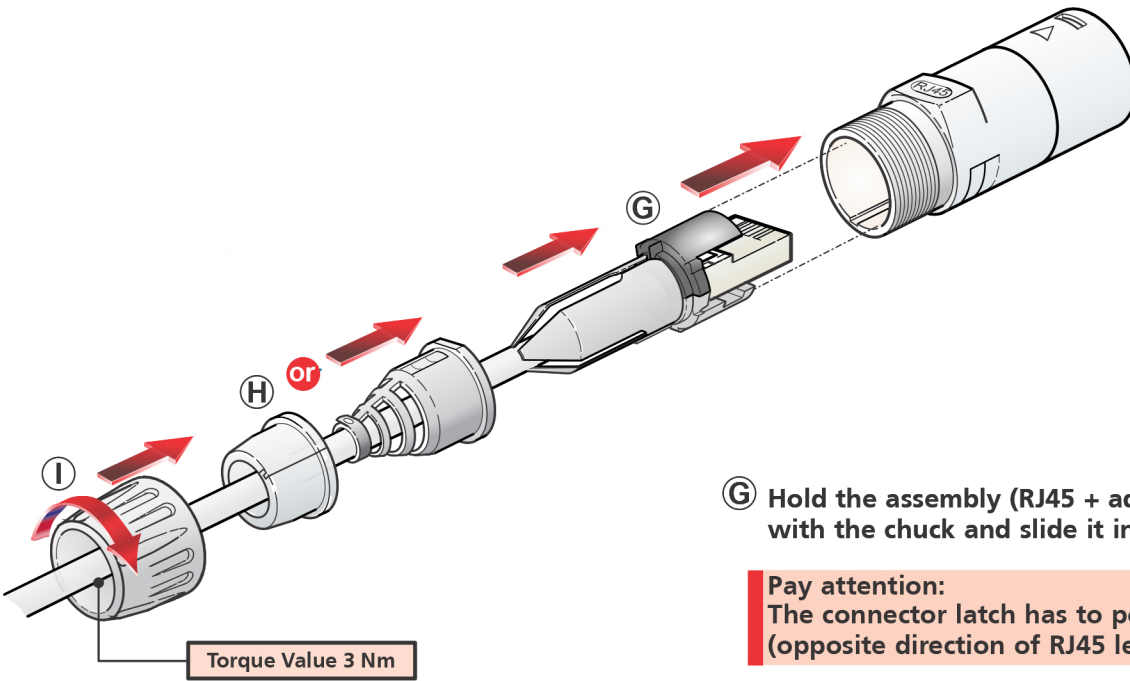


F1 Standard version:
Position the black & grey adapter onto the connector.

or

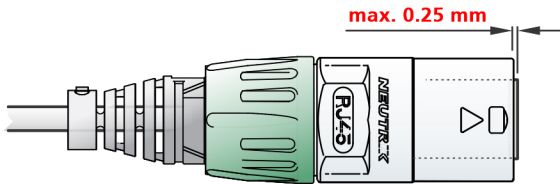


F2 Special version:
Position the white & grey adapter into the port.



Pay attention:
The connector latch has to point downwards (opposite direction of RJ45 lettering)

CAUTION:

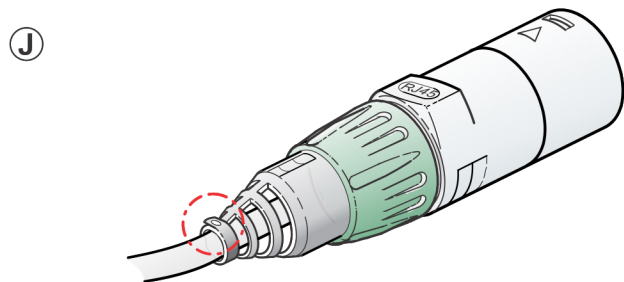


max. 0.25 mm

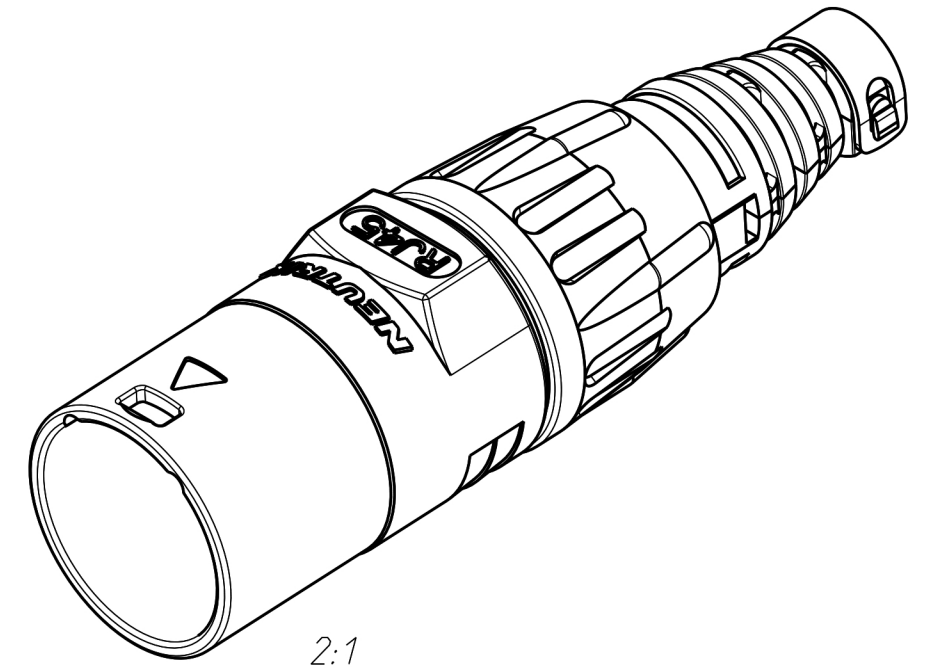
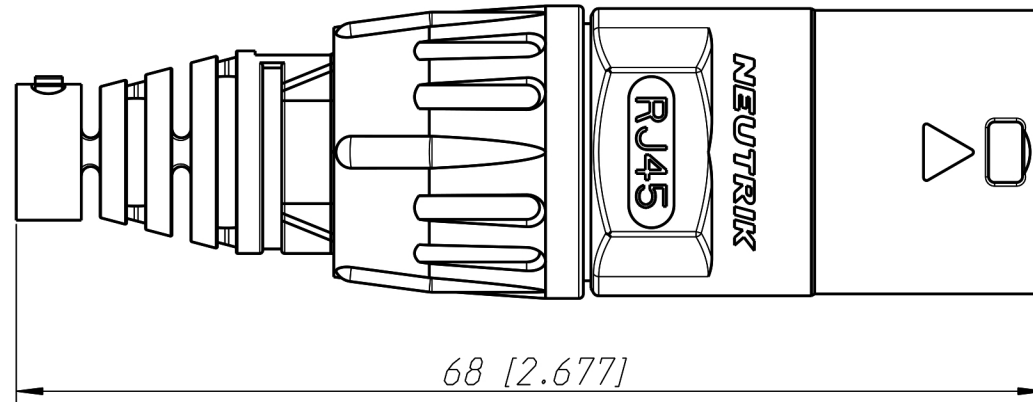
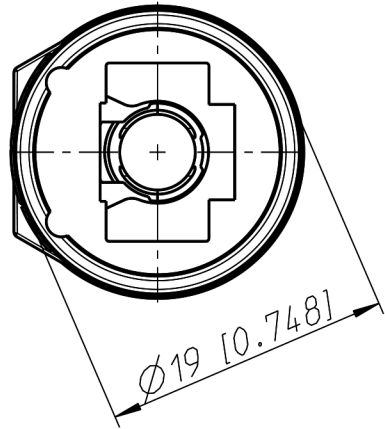
H Slide the bushing and boot to the housing and tighten the bushing (max. torque 3 Nm).

I Tighten the bushing (max. torque 3 Nm).

J Close the seal of the boot.

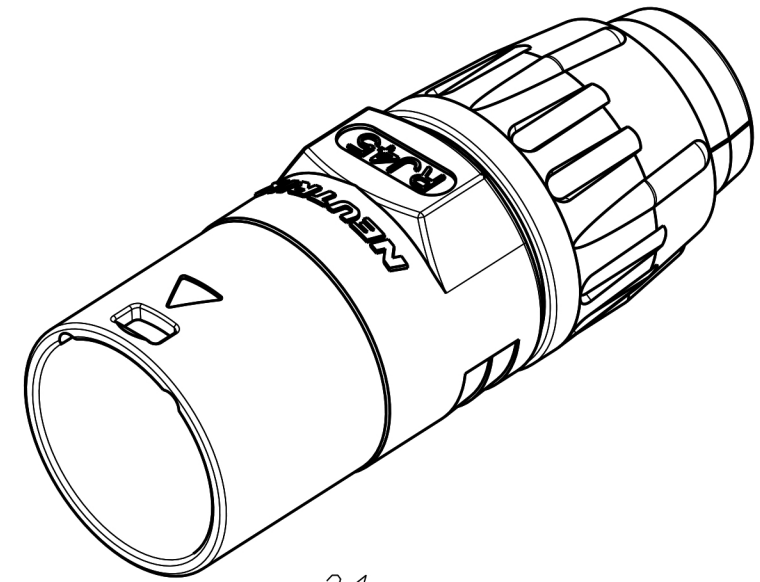
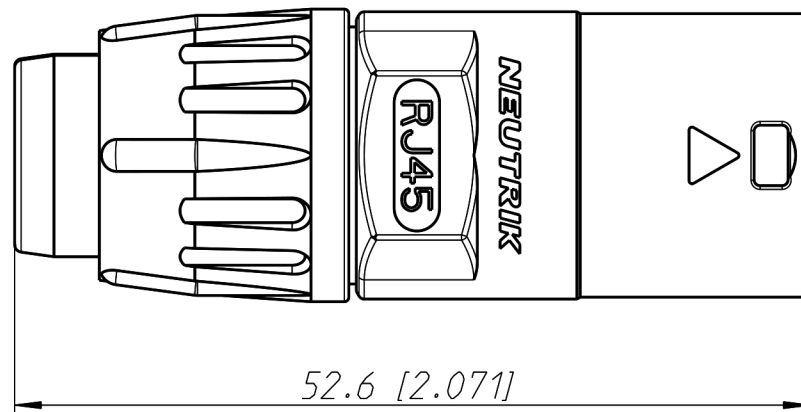
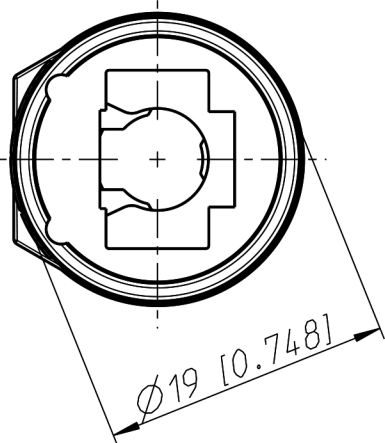


type 1



2:1

type 2



2:1

Show Me
CABLES

cables & connectors since 1995

Title: Neutrik RJ45 Cat5e/Cat6 Ethercon Cable Housing I
NE8MC

Part No. 855